

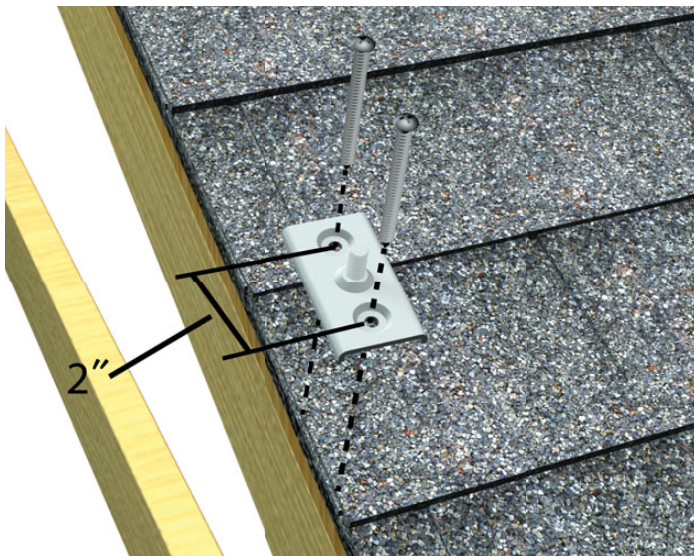
INSTALLATION INSTRUCTIONS ASPHALT ROOF FLASHING KIT - 560105

Installing a Flashing Kit



CAUTION: READ ALL INSTRUCTIONS BEFORE INSTALLING KIT. ADDITIONAL ITEMS WILL BE NEEDED. THIS INCLUDES A TAPE MEASURE, RATCHET, MARKER, CHALK SNAP LINE, AND A POWER DRILL.

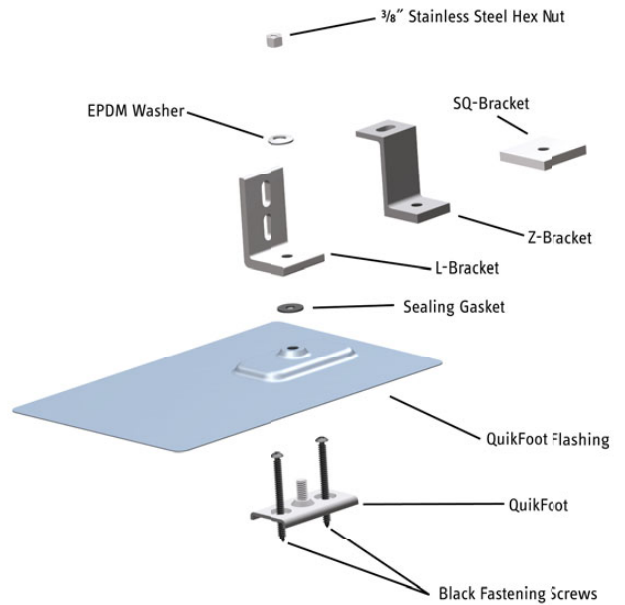
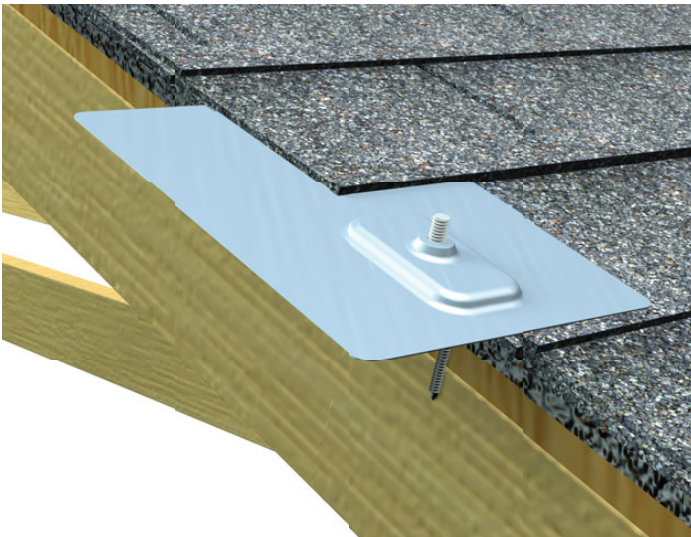
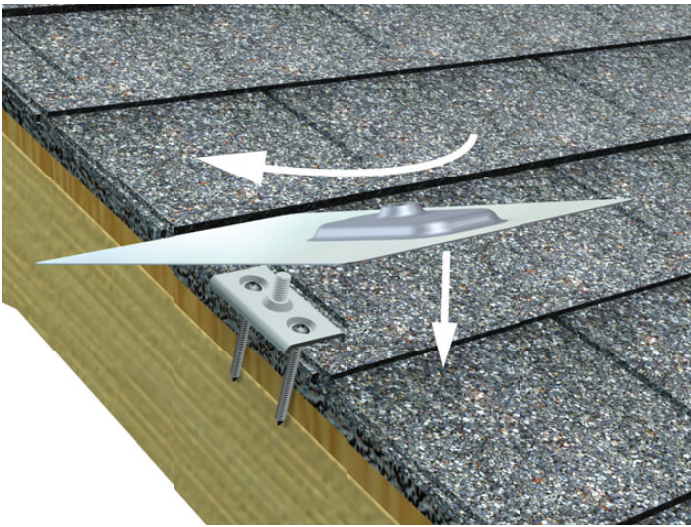
1. Unpack all of the boxed components and familiarize yourself with the individual parts.
2. Locate the rafters and snap horizontal and vertical lines to mark the installation position of the flashing.
3. Install base piece and screws as shown in the image below.



4. Insert the flashing so the top part is under the next row of shingles and pushed far enough up slope to prevent water infiltration through the vertical joint in the shingles.

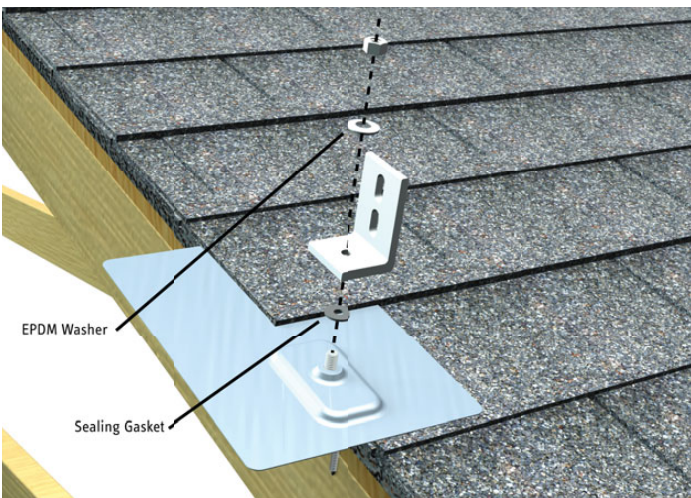



Note: Make sure to drill the mounting screws into the roof rafter. This is a key element in the durability of the racking system.



5. Place the EPDM Washer over the stud, pushing it down until it is flush with the top of the flashing. Place L-Bracket, and 3/8" Stainless Steel Hex Nut over stud as well. Tighten the nut to finish installation of the flashing.

Close up of individual parts that are included.
(L-Bracket, Z-Bracket, & SQ-Bracket are included in separate kits, and are intended for different mounting scenarios)



 For any service or warranty related issue, contact Stiebel Eltron at:
800.582.8423

STIEBEL ELTRON

17 West Street
West Hatfield, MA 01088

TOLL FREE 800.582.8423

PHONE 413.247.3380

FAX 413.247.3369

info@stiebel-eltron-usa.com

www.stiebel-eltron-usa.com

Printed on recycled chlorine-free paper with soy-based inks.

Due to our continuous process of engineering and technological advancement, specifications may change without notice.